



# M THE MONTAGU

THE PROMENADE, PORTSTEWART  
2 & 3 BEDROOM LUXURY APARTMENTS  
ALL WITH STUNNING SEA VIEWS



## 22 LUXURY APARTMENTS ALL WITH STUNNING SEA VIEWS

---

A luxury development mixing the traditional features of Portstewart Promenade with all the ingenuity, aesthetics and efficiency modern design has to offer.

The Montagu development occupies the site of the former Montagu Hotel on the Promenade at the heart of Portstewart. It comprises 12 x 3 bedroom apartments, 6 x 2 bedroom apartments and 4 bespoke penthouses. They all offer expansive accommodation including 7m wide living areas, dominated by the imposing feature windows, which command simply spectacular views. All the apartments are West facing, enjoying uninterrupted views from dawn to dusk over the ever-changing and dramatic Portstewart Bay and Donegal Headlands.

Uniquely, all apartments have access to a communal roof terrace adding to that special Montagu and Portstewart experience.





COFFEE SHOP

ART & DESIGN

LIGHT & SHADE

GALLERY

THE MONAGHAN





M



Google Maps ©

## LOCATION

Portstewart is located on the world famous North West Coast of Northern Ireland. The Town has a broad offering of spectacular walks, water sports of all kinds, championship golf, award winning restaurants and boutique shopping. All this overlooking awe-inspiring views and seascapes.

This backdrop provides the perfect gateway to explore the other nearby attractions the North Coast has to offer. From The World Heritage site of the Giant's Causeway, the iconic Carrick-a-Rede rope bridge and Dunluce Castle to the world renowned Old Bushmills Distillery; these are just a few landmarks which steep this area in mystique.

Bustling Portrush whose many attractions include The Royal Portrush Dunluce Golf Course which will host The Open in 2019 is only 3 miles away, as is Coleraine with its larger retail offerings.

But of course it is the surroundings that steal the show.





# SAVOUR THE NORTH COAST



Derek Toms ©







CHILDREN'S BATHING PLACE, PORTSTEWART.



Images courtesy of Impact Printing

## HISTORY

Portstewart has been famous for providing idyllic holidays and restful retreats since the 1800s. The Cliff Walk, the magnificent golden strand, Portstewart Golf Club's championship golf links combined with an operational fishing port and bathing beaches always were, and still remain, great attractions.

The Montagu Hotel, named after the local Estate of Lord Montagu, provided luxurious surroundings in which to enjoy all Portstewart and its surroundings had to offer. Fine dining, luxurious accommodation and unrivalled Westward facing views provided holidaymakers with the perfect ingredients to unwind and relax.

The Montagu Apartments now occupy that site and enjoy all the attractions Portstewart has to offer whilst maintaining that long-held tradition of excellence.



Constitution 25th May 1935











## THE MONTAGU DEVELOPMENT

---

Two apartment blocks, each comprising:

- ◆ 2 penthouses with internal area of circa 1400sq ft.  
Each has a 180sq ft terrace and roof terrace.
- ◆ 6 × 3 bed apartments ranging in size from 1230 to 1300sq ft
- ◆ Option to vary size of third bedroom
- ◆ 3 × 2 bed apartments of circa 930sq ft
- ◆ No phased construction
- ◆ A communal roof terrace for all to enjoy







## PRINCIPAL FEATURES

---

- ◆ The Montagu provides design and specifications of the highest and exacting standards throughout. The provision of space and feeling of well-being is an overriding and recurring feature of the entire development, maximising your enjoyment of the view and surroundings. Attention to detail in design and fit-out has been our highest priority.
- ◆ Sumptuous and spacious apartments with 23ft (7m) wide living rooms offering West facing uninterrupted sea views
- ◆ Unrivalled specification and finish throughout
- ◆ Three apartment types and four bespoke penthouses, most with floor to ceiling windows and balconies
- ◆ Located at the heart of the Promenade
- ◆ Pedestrian access off the Promenade
- ◆ Each apartment has secure parking accessed from Church Street
- ◆ Each apartment has a large private and secure store
- ◆ Secure areas to wash and dry sports equipment before storage





## SPECIFICATION HIGHLIGHTS

---

Turnkey specification to include:

- ◆ Glazing of the highest thermal and acoustic quality including triple glazing to the front elevation
- ◆ Comprehensive electronic and electrical specification throughout, ensuring convenience, efficiency, ambience, security and connectivity. E.g. Fibre optic broadband, CAT 6 cabling, remote heat controls and video entry system.
- ◆ Spacious kitchens with generous specifications using quality marque appliances
- ◆ Bathrooms and en-suites are tiled with underfloor heating and branded makes such as Laufen and Gessi
- ◆ MHVR heat recovery systems ensuring comfortable and efficient heating
- ◆ All apartments have generous internal storage with washing and drying machines separate from the kitchen/living area
- ◆ Tiling or carpeting to the remainder of the apartment
- ◆ **A comprehensive specification can be provided on request**



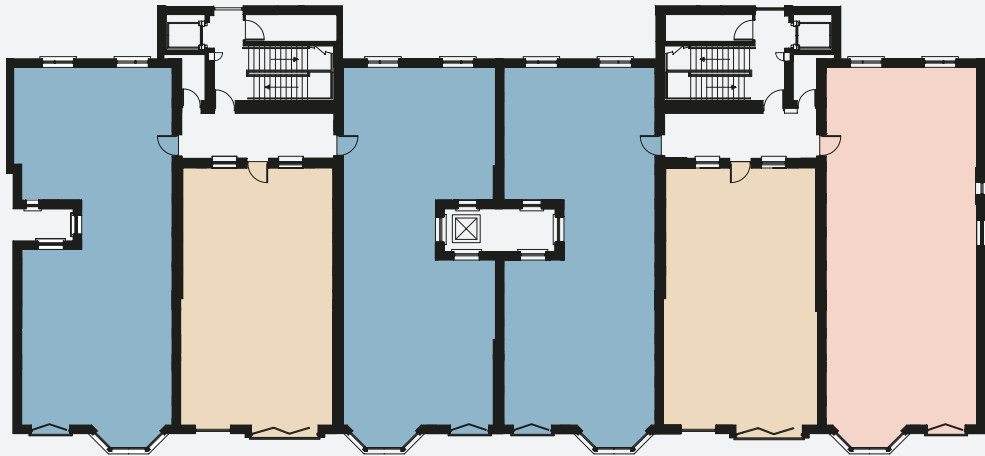


Steven Hanna ©

KEY TO APARTMENT LOCATION

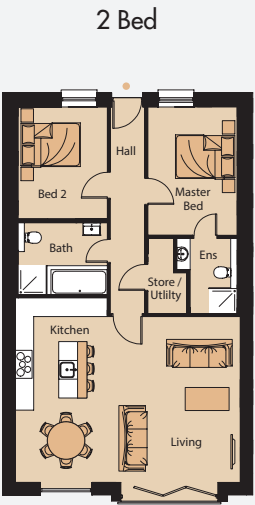
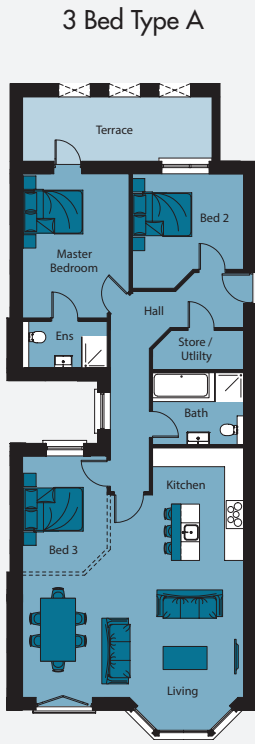


TYPICAL FLOOR LAYOUT

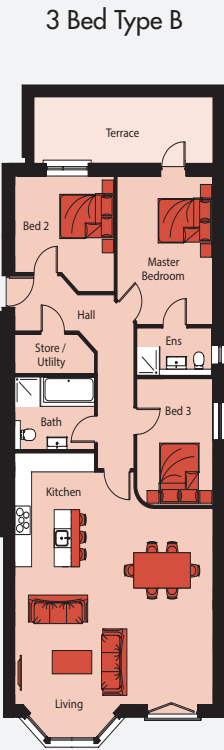




# 1ST FLOOR APARTMENT PLANS



*\*As these plans represent several apartments, all dimensions are approximate and may be subject to change.*



Living / Kitchen	23'0" x 29'6" (max)
Master Bed	14'7" x 12'5"
Ensuite	8'10" x 5'2"
Bed 2	11'0" x 11'6"
Bed 3	12'6" x 8'10"
Bathroom	9'3" x 7'7"
Store / Utility	9'3" x 3'11"

Total Floor Area - 1230 sq ft

3rd bedroom wall may be altered for variable room size.

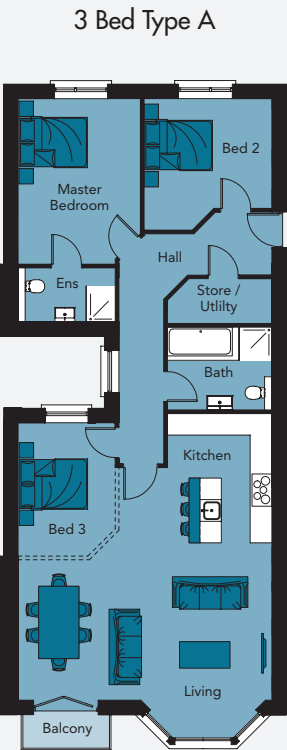
Living / Kitchen	23'6" x 18'8" (max)
Master Bed	14'1" x 9'5"
Ensuite	7'10" x 6'3"
Bed 2	12'7" x 9'5"
Bathroom	9'6" x 7'7"
Store/Utility	7'10" x 4'1"

Total Floor Area - 936 sq ft

Living / Kitchen	23'0" x 29'6" (max)
Master Bed	15'1" x 11'2"
Ensuite	8'8" x 4'11"
Bed 2	8'6" x 11'6"
Bed 3	12'9" x 8'6"
Bathroom	9'2" x 7'6"
Store / Utility	9'3" x 3'11"

Total Floor Area - 1300 sq ft

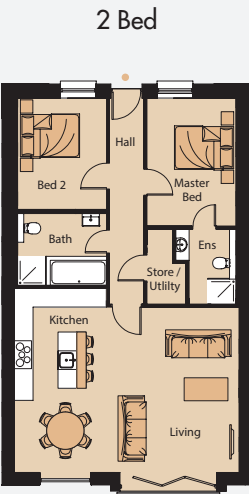
# 2ND & 3RD FLOOR APARTMENT PLANS



Living / Kitchen	23'0" x 29'6" (max)
Master Bed	14'7" x 12'5"
Ensuite	8'10" x 5'2"
Bed 2	11'0" x 11'6"
Bed 3	12'6" x 8'10"
Bathroom	9'3" x 7'7"
Store / Utility	9'3" x 3'11"

Total Floor Area - 1230 sq ft

3rd bedroom wall may be altered for variable room size.



*\*As these plans represent several apartments, all dimensions are approximate and may be subject to change.*

Living / Kitchen	23'6" x 18'8" (max)
Master Bed	14'1" x 9'5"
Ensuite	7'10" x 6'3"
Bed 2	12'7" x 9'5"
Bathroom	9'6" x 7'7"
Store/Utility	7'10" x 4'1"

Total Floor Area - 936 sq ft



Living / Kitchen	23'0" x 29'6" (max)
Master Bed	15'1" x 11'2"
Ensuite	8'8" x 4'11"
Bed 2	8'6" x 11'6"
Bed 3	12'9" x 8'6"
Bathroom	9'2" x 7'6"
Store / Utility	9'3" x 3'11"

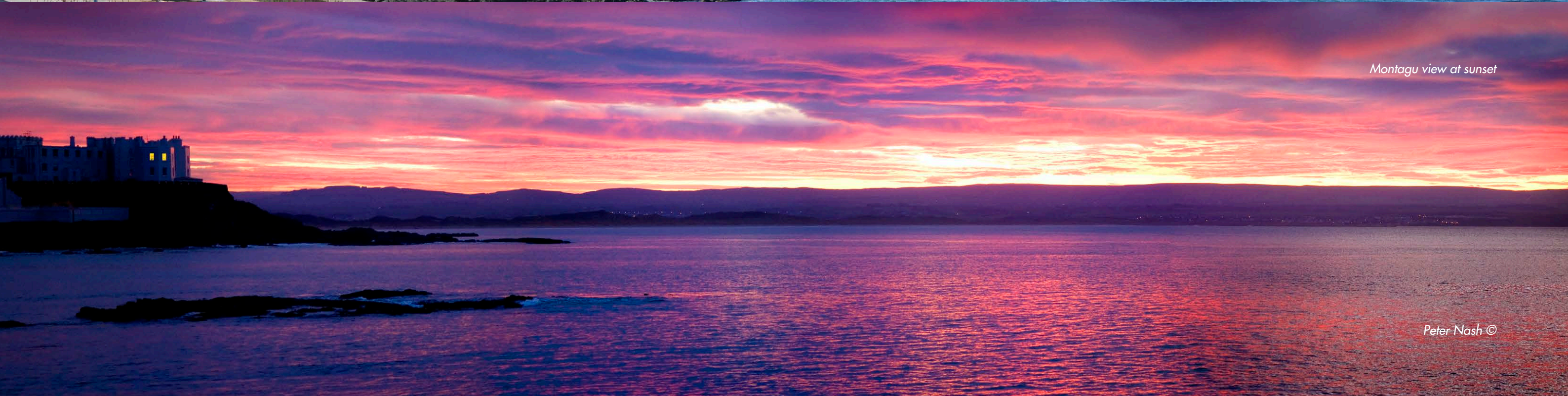
Total Floor Area - 1300 sq ft



*Montagu view by day*



*Montagu view at sunset*





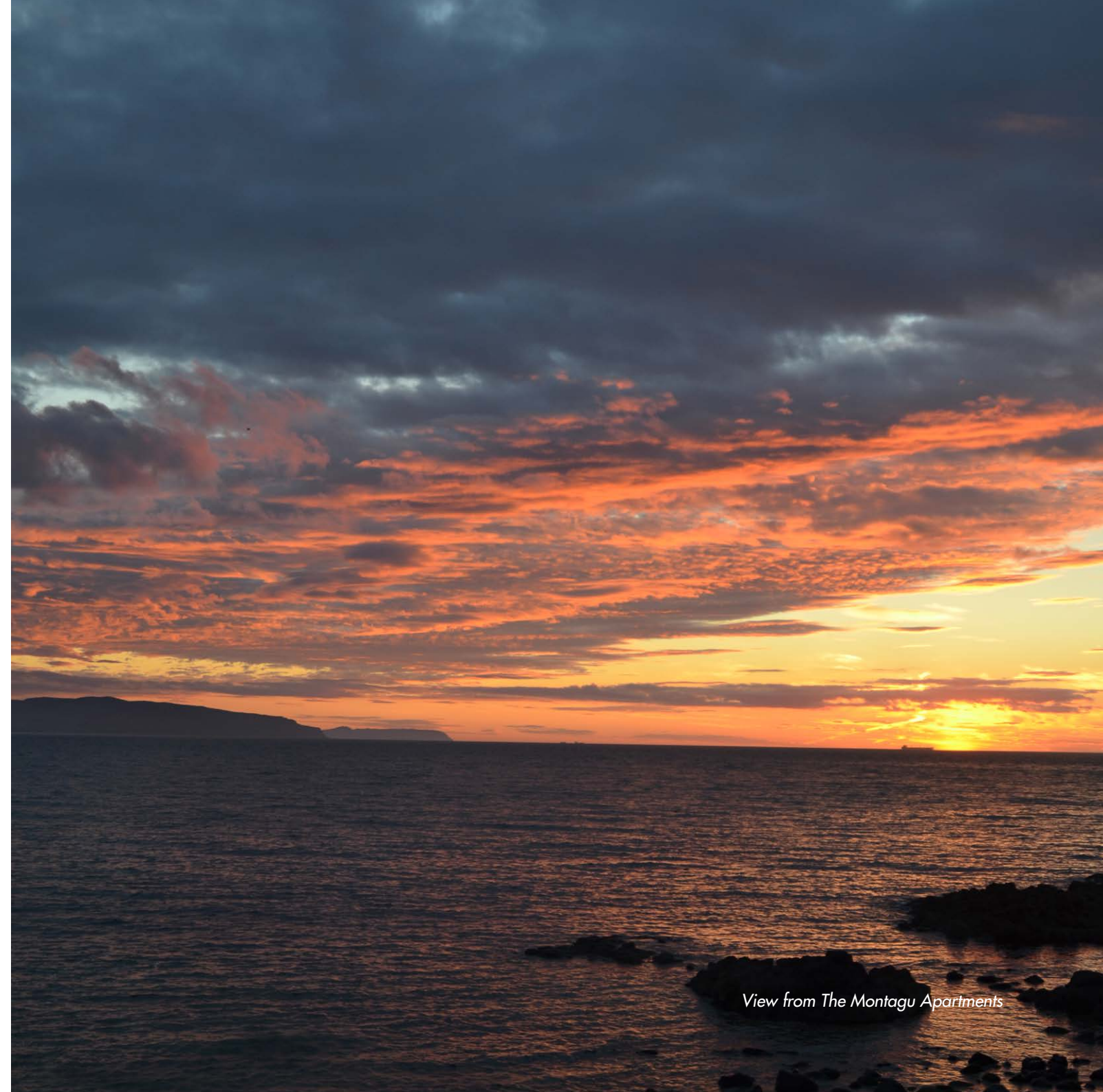
# THE MONTAGU

The Promenade, Portstewart  
Northern Ireland



NEW HOMES

**Colliers New Homes**  
25 Talbot Street, Belfast BT1 2LD  
Telephone 028 9024 4000  
[www.colliersni.com](http://www.colliersni.com)



*View from The Montagu Apartments*





THEMONTAGU.COM